

SureBatch

PRECISION LIQUID METER

The SureBatch Precision Liquid Meter pumps and accurately meters liquids to be injected, sprayed, or added to any liquid or dry material. Uses include applying treatments to dry fertilizer, liquid manure, seed treatment, and injecting micro-nutrients in fertilizer batches.

OPERATING MODES

Batch By Time

Set the total amount of liquid to be pumped (Batch Set Point) and the time for this amount to be pumped (Pump Time). SureBatch will control the flow rate to achieve the entered scenario

Batch by Rate

Set the total amount of liquid to be pumped (Batch Set Point) and the flow rate (Rate Set Point). SureBatch will pump at this rate until the Batch Set Point is achieved, then stop

Flow Rate - Continuous

Set the flow rate (Rate Set Point) for liquid to be pumped at. SureBatch will pump at this flow rate indefinitely

FEATURES

Units

Meter Gallons or Ounces. Easily and quickly switch between units

Pump Delay

Set the period of time to delay starting the pumping cycle. After starting the cycle, either on the screen or with the remote, the pump will start after the delay time

Recipes

Load up to four present recipes. Select which recipe will be used on the screen or with the remote

External Start

Start a batch from an external signal

Valve Operation

Open and close a valve on pump start/stop

TOTALIZERS

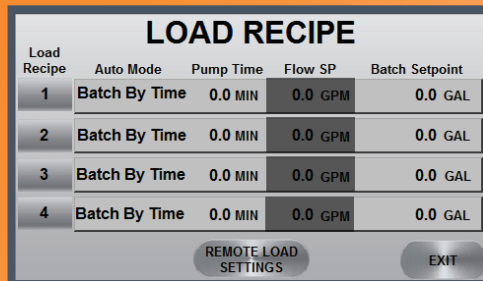
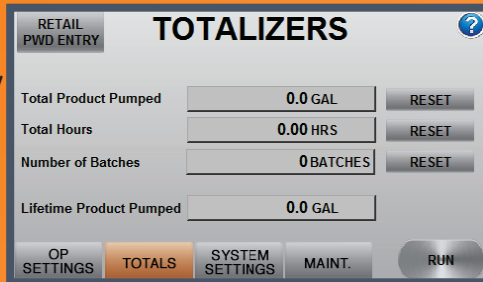
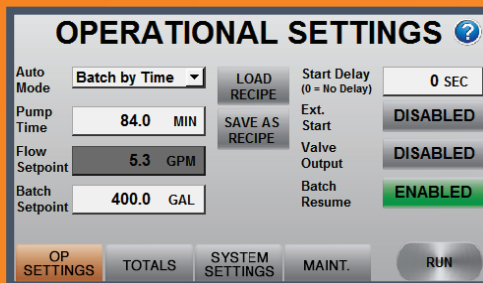
SureBatch will total the volume pumped, hours of operation, and number of batches

REMOTE OPERATION

SureBatch comes standard with a six function key-fob remote. It starts/stops the current batch and selects one of the four saved recipes

POWER OPTIONS

12V DC
120V AC



PUMP SPECIFICATIONS

Pump Output

Low Volume

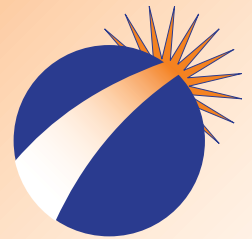
PSI	GPM
0	2.6
20	2.1
40	1.6
60	1.2
80	0.5

Standard

PSI	GPM
0	4.1
20	3.5
40	2.5
60	1
80	0

Minimum Pump Output

20 oz./min 40 oz./min



SureFire
Ag Systems

SureFire Ag System
Atwood, KS
www.surefireag.com