



# ***SurePoint***

## Spray Tender

# **SALES GUIDE**



866-626-3670

[www.surepointag.com](http://www.surepointag.com)

#surepointag





# SUREPOINT AG Spray Tender Systems

SurePoint Ag's Spray Tender Systems give you maximum efficiency and safety!  
Spray faster and with greater accuracy.

- Accuracy
- Sprayer Efficiency
- Eliminate Chemical Exposure
- Batch Calculation
- Labor Utilization
- Record Keeping



## FULLY AUTOMATED

QuickDraw is a fully automated spray tender system. QuickDraw calculates the correct amount of each chemical in the batch.



## SEMI-AUTOMATED

QuickDraw Lite is a manual or semi-automated spray tender system.



## SAFE MANUAL MIXING

With ChemBlade ES, you put a full jug in and 15 seconds later, the lid opens and you remove an empty full cleaned jug - inside and out!



# WHY INVEST in QuickDraw?

## LESS TIME LOADING MEANS MORE TIME SPRAYING.

The SurePoint QuickDraw is a fully automated spray tender system. Manually calculating product amounts is a thing of the past! Simply enter acres or total gallons, sprayer application rate, and chemical rate per acre. QuickDraw then calculates the amount of each chemical in the batch, including manually added chemicals.



### SPRAYER EFFICIENCY

Efficiency is the flagship benefit of the QuickDraw spray tender system. When your sprayer is sitting at the edge of the field, it is covering zero acres per hour. Minimizing fill time is critical so you can cover more acres per day while conditions are right.



### ELIMINATE CHEMICAL EXPOSURE

It's that simple. QuickDraw and ChemBlade ES eliminate chemical exposure. Keep yourself safe and your employees safe!



### ACCURACY

Mass Meter flow measurement technology, the most accurate available, combined with automated batch calculations ensure you get the correct amount of each chemical in every batch.



### LABOR UTILIZATION

It's critical that every batch is mixed correctly. QuickDraw is the tool that enables your employees to get it right every time with fewer errors and less time loading.

Name	Rate	Order	Prod Volume	Total	Unit	Prod Rate
Chemical 1	5.2 GAL		118.6 GAL			3.15
Chemical 2	5.2 GAL	3	25.6 GAL	25.6 GAL		3.15
Chemical 3	5.2 GAL	3	25.6 GAL	25.6 GAL		3.15
Chemical 4	5.2 GAL	3	25.6 GAL	25.6 GAL		3.15
Chemical 5	5.2 GAL	3	25.6 GAL	25.6 GAL		3.15
Chemical 6	5.2 GAL	3	25.6 GAL	25.6 GAL		3.15
Chemical 7	5.2 GAL	3	25.6 GAL	25.6 GAL		3.15
Chemical 8	5.2 GAL	3	25.6 GAL	25.6 GAL		3.15
Chemical 9	5.2 GAL	3	25.6 GAL	25.6 GAL		3.15
Chemical 10	5.2 GAL	3	25.6 GAL	25.6 GAL		3.15
Chemical 11	5.2 GAL	3	25.6 GAL	25.6 GAL		3.15
Chemical 12	5.2 GAL	3	25.6 GAL	25.6 GAL		3.15
Chemical 13	5.2 GAL	3	25.6 GAL	25.6 GAL		3.15
Chemical 14	5.2 GAL	3	25.6 GAL	25.6 GAL		3.15
Chemical 15	5.2 GAL	3	25.6 GAL	25.6 GAL		3.15
Chemical 16	5.2 GAL	3	25.6 GAL	25.6 GAL		3.15
Chemical 17	5.2 GAL	3	25.6 GAL	25.6 GAL		3.15
Chemical 18	5.2 GAL	3	25.6 GAL	25.6 GAL		3.15
Chemical 19	5.2 GAL	3	25.6 GAL	25.6 GAL		3.15
Chemical 20	5.2 GAL	3	25.6 GAL	25.6 GAL		3.15

### BATCH CALCULATION

QuickDraw eliminates the need for manual calculations and potential errors. Simply enter acres or total gallons, sprayer application rate, and chemical rate per acre. QuickDraw calculates the amount of each chemical in the batch, including manually added chemicals.



### RECORD KEEPING

QuickDraw records a record of every batch loaded. Date, time, grower, farm, field, machine, operator, as well as measured totals of each product in the batch are recorded.



# QuickDraw Max

QuickDraw Max is a fully automated spray tender system. Start by creating a recipe, the applied application rates/acre for each chemical in the batch. Recipes are saved and used every time you load that mix of chemicals.



## 4-PRODUCT

Three (3) - 1" Port Valves  
One (1) - 1 1/2" Port Valve



## 6-PRODUCT

Five (5) - 1" Port Valves  
One (1) - 1 1/2" Port Valve  
OR  
Three (3) - 1" Port Valves  
Three (3) - 1 1/2" Port Valves



## 9-PRODUCT

Six (6) - 1" Port Valves  
Three (3) - 1 1/2" Port Valves

## Components of the QuickDraw System

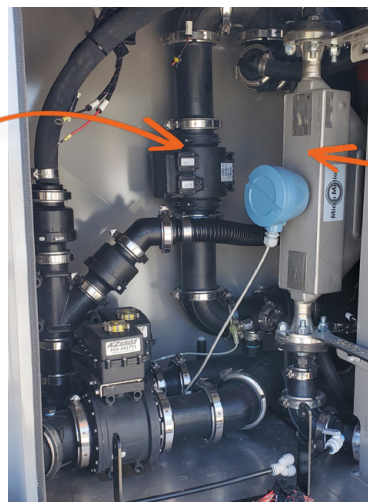
### The Most Accurate Flow Meter Available

The Micro-Motion mass flow sensor used in QuickDraw measures the mass flow (weight) and density of the product as it moves through the sensor. With those two measurements, it calculates the volume of any liquid with extreme accuracy, regardless of physical properties.

### Chemical Measurement

#### Mass Flow Meter Technology

Requires no calibration. The mass meter measures mass flow rate, density and liquid volume flow. As a result it is able to measure any liquid with extreme accuracy, regardless of physical properties, specifically density, viscosity, or conductivity.



3" E-Mag  
Meter

Mass  
Flow  
Meter

### Chemical/Product Control Values

Chemical products are controlled by CANBUS communication valves. Valves provide status communication to controller to ensure desired action. Alarms stop batch if desired action is not confirmed.

### Carrier Measurement

#### 3" E-Mag Flow Meter

All carrier, water or fertilizer, is measured with 3" electromagnetic flow-meter.

Auto-calibration procedure calibrates 3" meter using the mass flow meter.

*Mechanical/Turbine options available when using low-conductivity carrier solution(s).  
Necessary when using RO water.*



# TWO CONFIGURATIONS of the Spray Tender System

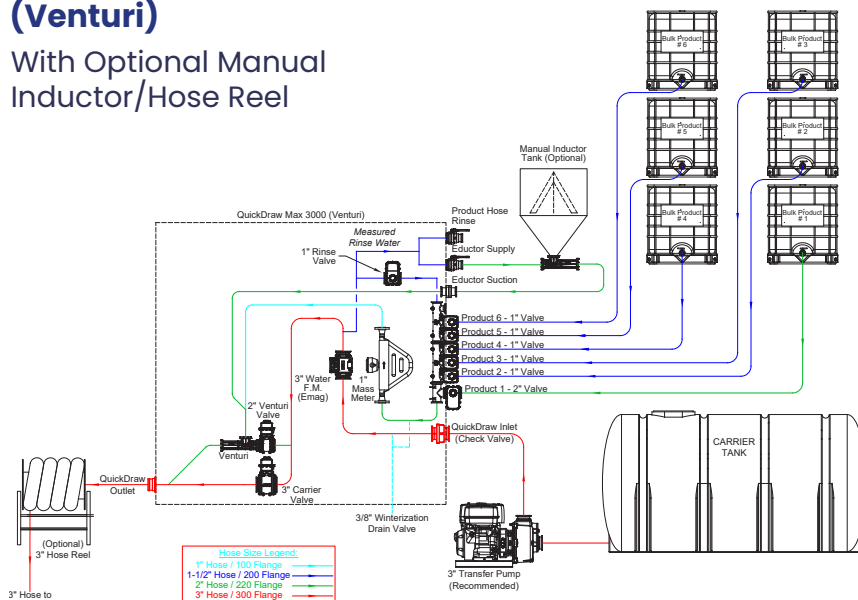
## Venturi Suction

Transfer pump is located on the QuickDraw inlet. It pushes water across a venturi to create suction which draws chemical products through the mass meter and into the batch. With Venturi configuration, chemical does not go through the pump. This is the most common configuration used.

**Maximum batch concentration  
30% - Chemical.**

## 6 Product QuickDraw 3000 Max (Venturi)

With Optional Manual  
Inductor/Hose Reel



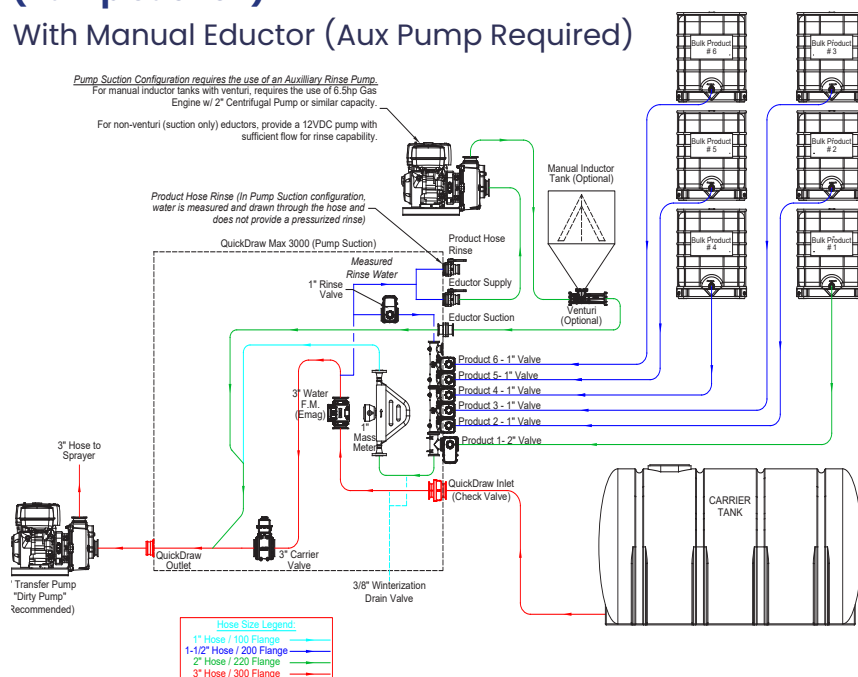
## Pump Suction

Transfer pump is located on the QuickDraw outlet. Suction from the pump is utilized to draw water and chemical products through the mass meter and into the batch. Requires second pump to create pressurized water for rinsing jugs in manual eductor.

**Maximum batch concentration  
70% - Chemical.**

## 6 Product QuickDraw 3000 Max (Pump Suction)

With Manual Eductor (Aux Pump Required)





# FEATURES of the Spray Tender System

- RUN SCREEN & BATCHING CYCLE
- BATCH SETUP & CALCULATION SCREEN
- CONTAINER CALCULATION
- PRODUCT HOSE RINSE
- AUTO CALIBRATION OF CARRIER FLOWMETER
- RECORD KEEPING
- AUTOMATED PUMP START/STOP
- AIR PURGE
- CARRIER REFILL
- LANGUAGES
- IPAD APP

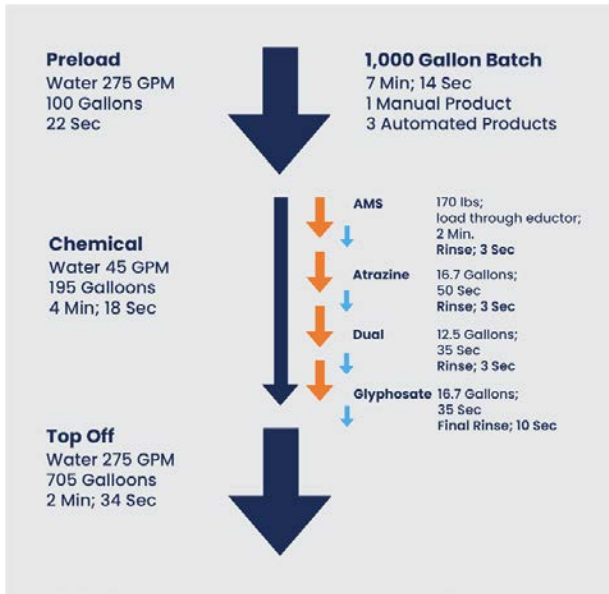
**“ QuickDraw allows me to get an additional one or two loads sprayed every day. ”**

**- Lee Mueller, QuickDraw User**



## Features of QuickDraw

### Run Screen & Batching Cycle



### Run Screen

When batch setup is complete, utilize the run screen to start the batch, monitor batch progress, and enter manually measured products when added.

### Batch Setup & Calculation Screen

#### Job Screen

#### Recipe

- Products
- Applied Rates/Acres
- Default Batch Size, Application Rate & Preload Volume

#### Automated Batch Calculation

#### Four Calculation Modes

- Volume & App Rate
- Area & App Rate
- Individual Volume
- Area & Carrier Rate

Recipe: <div>Corn Pre 2023</div>		<div>QL1</div>	<div>QL2</div>	Total Acres	<div>100.0</div>	App Rate	<div>10.0</div>	GPA
Calculation Mode		<div>Volume &amp; App Rate</div>		Volume	<div>1,000.0</div>	GAL	Pre-load %	<div>10.0</div> %
Name	Rate	Order	Prod Volume	Total	Inv.	Prod Rinse		
Carrier: Water	9.2 GPA			918.6 GAL	<div><div></div><div></div><div></div><div></div><div></div><div></div><div></div><div></div><div></div><div></div></div>	<div>3</div>	Sec	
Tota1: Atra-V 4L (Atrazine)	<div>32.00</div> fl. Oz/Ac	<div>3</div>	<div>25.0</div> GAL	<div>25.0</div> GAL		Final Rinse		
Tota2: NO PRODUCT	<div>0.00</div> GAL/Ac	<div>0</div>	<div>0.0</div> GAL	<div>0.0</div> GAL		<div>10</div>	Sec	
Tota3: Mocasin	<div>16.00</div> fl. Oz/Ac	<div>4</div>	<div>12.5</div> GAL	<div>12.5</div> GAL				
Tota4: Slam 54 Extra (Glyph)	<div>24.00</div> fl. Oz/Ac	<div>5</div>	<div>18.8</div> GAL	<div>18.8</div> GAL				
Tota5: NO PRODUCT	<div>0.00</div> GAL/Ac	<div>0</div>	<div>0.0</div> GAL	<div>0.0</div> GAL				
Tota6: NO PRODUCT	<div>0.00</div> GAL/Ac	<div>0</div>	<div>0.0</div> GAL	<div>0.0</div> GAL				
Man. Prod1: AMS	<div>17.00</div> lbs/100	<div>1</div>	<div>170.0</div> lbs	<div>17.0</div> GAL		<div>SAVE</div>		
Man. Prod2: Mesotrione	<div>4.00</div> fl. Oz/Ac	<div>2</div>	<div>3.1</div> GAL	<div>3.1</div> GAL		<div>Duplicate</div>		
Man. Prod3: Venturi (NIS)	<div>2.00</div> Qt/100	<div>6</div>	<div>5.0</div> GAL	<div>5.0</div> GAL		<div>NEW</div>		
Man. Prod4: NO PRODUCT	<div>0.00</div> GAL/Ac	<div>0</div>	<div>0.0</div> GAL	<div>0.0</div> GAL		<div>SELECT RECIPE</div>		
Man. Prod5: NO PRODUCT	<div>0.00</div> GAL/Ac	<div>0</div>	<div>0.0</div> GAL	<div>0.0</div> GAL				

Calculation Mode	Volume & App Rate	▼	Volume	1,000.0	GAI	PreLoad %	10.0	%
Name	Area & App Rate		Order	Prod Volume	Total	Inv.	Prod Rinse	
Carrier Water	Individual Volume	9.2 GPA			918.6 GAL	↕	3	Sec
Tota1: Atra-V 4L (Atrazine)	32.00 fl. Oz/Ac	3	25.0 GAL	25.0 GAL	↕			
Tota2: NO PRODUCT	0.00 GAL/Ac	0	0.0 GAL	0.0 GAL	↕			Final Rinse
Tota3: Mocasin	16.00 fl. Oz/Ac	4	12.5 GAL	12.5 GAL	↕		10	Sec
Tota4: Slam 54 Extra (Glyph)	24.00 fl. Oz/Ac	5	18.8 GAL	18.8 GAL	↕			
Tota5: NO PRODUCT	0.00 GAL/Ac	0	0.0 GAL	0.0 GAL	↕			
Tota6: NO PRODUCT	0.00 GAL/Ac	0	0.0 GAL	0.0 GAL	↕			
Man. Prod1: AMS	17.00 lbs/100	1	170.0 lbs	17.0 GAL				SAVE
Man. Prod2: Mesotrione	4.00 fl. Oz/Ac	2	3.1 GAL	3.1 GAI				Duplicate
Man. Prod3: Venturi (NIS)	2.00 Qt/100	6	5.0 GAL	5.0 GAL				
Man. Prod4: NO PRODUCT	0.00 GAL/Ac	0	0.0 GAL	0.0 GAL				NEW
Man. Prod5: NO PRODUCT	0.00 GAL/Ac	0	0.0 GAL	0.0 GAL				SELECT RECIPE
Man. Prod6: NO PRODUCT	0.00 GAL/Ac	0	0.0 GAL	0.0 GAL				
PRODUCT HOSE PINGS DISABLED			Field/Weather	EDIT	RUN	MENU		



## Container Calculation

QuickDraw shows operator how many jugs or bags are required and calculates the amount to be measured from partial container. Check off each container as emptied to ensure the correct amount is added to the batch.

Manually Added Product

Diablo (Dicamba)

Container Size: 1.0 GAL  
Added/Needed: 0.00/4.70

Total Required: 4.7 GAL

Actual Product Loaded: 0.0 GAL

Required Amt Added Finished

0.0/89.6  
#. Oz

2 Inch Venturi Default

PAUSE Batch: 500.0 GAL Actual: 59.1 GAL

Manually Added Product

Diablo (Dicamba)

Container Size: 1.0 GAL  
Added/Needed: 3.00/4.70

Total Required: 4.7 GAL

Actual Product Loaded: 3.0 GAL

Still Needed: 1.7 GAL

Required Amt Added Finished

0.0/89.6  
#. Oz

2 Inch Venturi Default

PAUSE Batch: 500.0 GAL Actual: 68.1 GAL

Manually Added Product

AMS

Container Size: 51.0 lbs  
Added/Needed: 1.00/1.67

Total Required: 85.0 lbs

Actual Product Loaded: 51.0 lbs

Still Needed: 34.0 lbs

Required Amt Added Finished

0.0/119.7  
#. Oz

2 Inch Venturi-Default

PAUSE Batch: 500.0 GAL Actual: 37.6 GAL





Features of QuickDraw

Product Hose Rinse

Empty Chemical and Rinse Hose from Tote to QuickDraw.

Accurately Utilizes Chemical in Hose as Part of Target Amount

Length Units  
Feet

Diameter Units  
Inches

	Hose Length (Feet)	Hose Diameter (Inches)	Hose Volume (GAL)	Rinse Hose
Tote1: Atra-V 4L (Atrazine)	11.5	2.0	1.87	<input checked="" type="checkbox"/>
Tote2: NO PRODUCT	0.0	0.0	0.00	
Tote3: Moccasin	14.5	1.5	1.33	<input checked="" type="checkbox"/>
Tote4: Slam 54 Extra (glyphosate)	0.0	0.0	0.00	<input type="checkbox"/>
Tote5: NO PRODUCT	0.0	0.0	0.00	
Tote6: NO PRODUCT	0.0	0.0	0.00	

Enter the Hose Length and Diameter for each product. Click on the Rinse Hose button(s) to have the hose volume subtracted from what is batched, so it can be added during rinsing.

JOB

RUN



Product Hose Rinse

NOTE: OPENING VALVES WILL PULL PRODUCT INTO THE BATCH. ENSURE YOU OPEN THE CORRECT VALVE. FOR THE FULL INSTRUCTION SET, CLICK ON THE HELP BUTTON.

Set Point  
Actual

Rinse Volume

Arrow  
Valve 1  
100%

16.7  
16.7 GAL

10.7 GAL

NO PRODUCT  
Valve 4  
0%

0.0  
0.0 GAL

0.0 GAL

Bravo  
Valve 2  
0%

13.5  
13.4 GAL

0.0 GAL

NO PRODUCT  
Valve 5  
0%

0.0  
0.0 GAL

0.0 GAL

NO PRODUCT  
Valve 3  
0%

0.0  
0.0 GAL

0.0 GAL

PAUSE

Batch: 1000.0 GAL

Actual: 227.4 GAL

Finished

Spray Tender Sales Guide

9

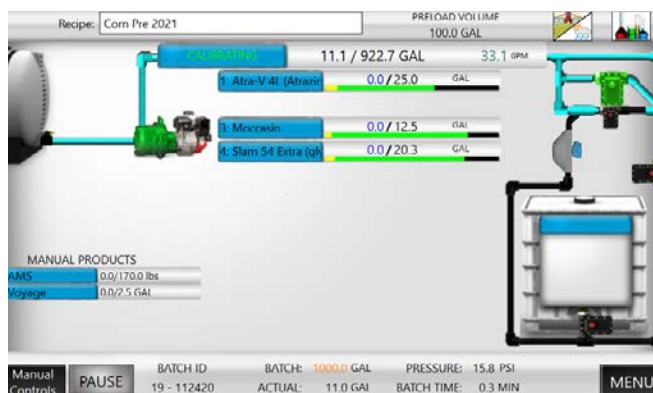
2023 Copyright SurePoint Ag Systems, Inc.

## Features of QuickDraw

### Auto Calibration of Carrier Flow Meter

#### Utilizes the Mass Meter to Calibrate 3" Carrier Flowmeter

QuickDraw utilizes a 3" E-Mag flowmeter to measure carrier solution. Utilize the Auto Calibration Cycle to fine-tune flowmeter accuracy. The auto cal. process cycles carrier through both flowmeters utilizing the mass meter flow reading to set the calibration of the carrier flowmeter.



Each carrier product (water, 32%, 28%, 10-34-0, etc) will have stored calibration value specific to that product.





## Record Keeping

**QuickDraw Keeps Records of Every Batch Mixed!**

FIELD AND WEATHER SETTINGS			
Grower:	Wolters Farms	Field:	29-2-33
Farm:	Matt Wolters	Recipe:	29-1-33 Airport Corn Fertilizer
Operator:	William Johnson	Machine:	John Deere 4930
Crop:	Corn	Pest:	Winter Seeded Annuals
Temperature:	72.0 °F	Wind Dir/Speed:	E 9.0 MPH
		Boom Height:	30.0 Inches
<input type="button" value="Importing Fields from John Deere Operations Center?"/>		<input type="button" value="JOB"/>	<input type="button" value="RUN"/>
		<input type="button" value="MENU"/>	

Example of Record:

**Batch ID:** 004-04/17/20  
**Grower:** Matt Wolters  
**Farm:** Matt Wolters  
**Field:** 29-2-33  
**Operator:** Matt Wolters  
**Machine:** Row Gator

**Recipe:** Corn pre-plant  
**Date/Time:** 04-17-2020 18:07  
**Wind/Temp:** 8.0MPH W 80.0 F  
**Status:** Completed  
**Total:** 998.8  
**Acres:** 100.0

Product (EPA ID)	Rate		Total	
-Water ( )			916.7	GAL
Atra-V 4L (atrazine) (89167-38-89391)	32.00	OZ/Acre	25.3	GAL
Tomahawk 5 (glyphosate 5.4 lb/gal) (33270-15)	26.00	OZ/Acre	20.2	GAL
T-Rex (dicamba) (87895-5-80967)	16.00	OZ/Acre	12.4	GAL
AMS ( )	17.00	lbs/100	156.0	lbs
Undercover (mesotrione) (89168-54)	3.00	OZ/Acre	300.0	OZ
Varsity (flumioxazin) (89167-45-89391)	2.00	OZ/Acre dry	200.0	OZ
Venturi ( )	2.00	Quarts/100	640.0	OZ



## Automated Pump Start/Stop

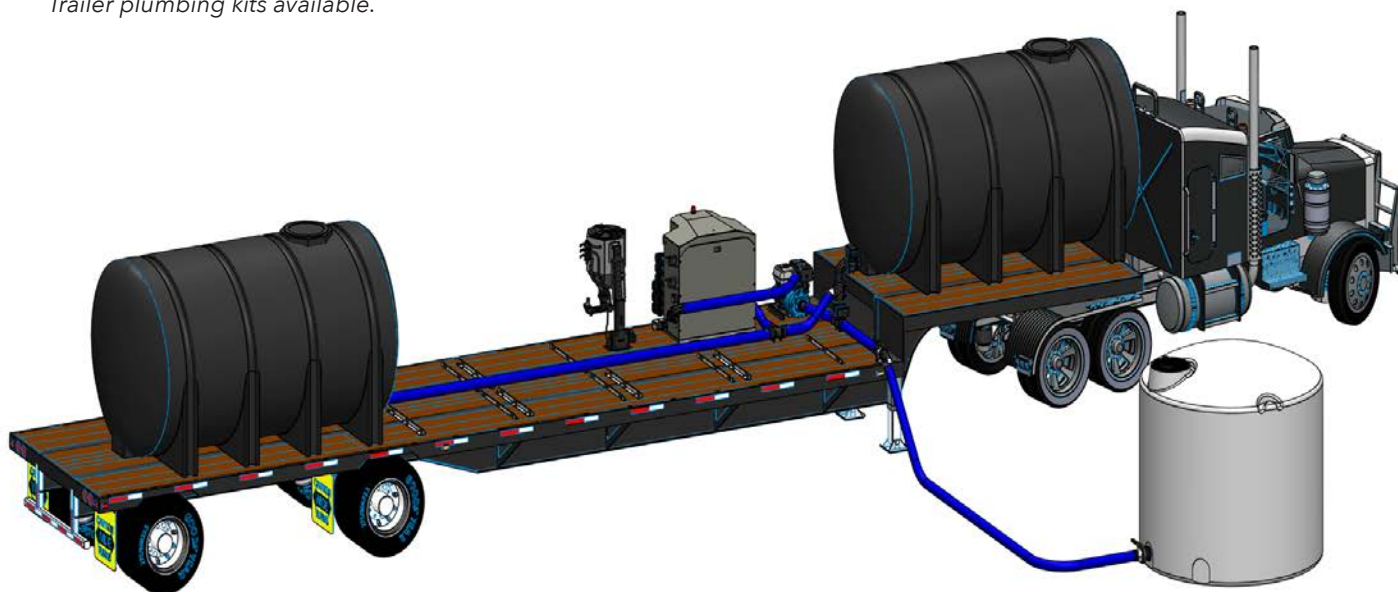
- QuickDraw provides start signal to start iGX Honda, AC Motors, Hydraulic Motors
- On "Batch Start" QuickDraw provides Start Signal
- iGX Engine has Automated Choke
- Start Batch and Pump from iPad App
- Two Speed Electronic Throttle (Controller with Toggle Switch Installed in QuickDraw)
- Connect QuickDraw stop output to most engine makes and models for automated engine kill when batch is complete



## Carrier Refill

- Use QuickDraw and transfer pump on trailer to pull from ground storage tank and fill trailer tanks
- "Pre-Treat" water with AMS or water conditioner while filling trailer.
- Use "Carrier Fill Recipe" to set volume to load, QuickDraw automatically shuts value and kills pump when set point is reached.

*Trailer plumbing kits available.*



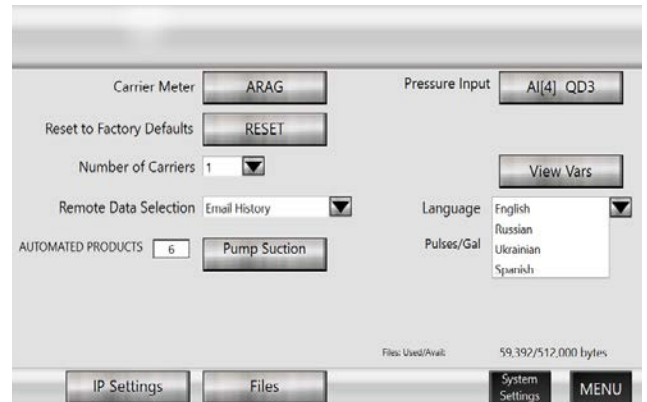


## Features of QuickDraw

### Languages

#### Four Languages Currently Available

- Spanish
- Russian
- Ukrainian
- English



### iPad App

#### Remote Operation Terminal

- Control all Batching Functions
- Monitor Batch Progress
- Execute Hose and Tote Rinse Remotely
- Manual Operate Any Valve

#### Create Recipes and Enter Record Keeping Inputs Offline

- Wirelessly Transmit to QuickDraw Controller
- Create Recipes on App and Transfer to QuickDraw
- Download Records From QuickDraw Controllers
- Filter, Sort and Create Reports



# Carrier Blending & Fertilizer Blending

Utilize in a stationary plant setup or installed on a mobile tender or mixing trailer.



## Carrier Blending

Use QuickDraw to blend up to four carrier products (water and/or fertilizers) with chemicals going into the sprayer. Commonly used on sprayer tender trailers.

App Rate: 18.5 GPA  
Volume: 1,000.0 GAL

### CARRIER SETUP

Carrier Calc Mode: Volume  
PreLoad Vol: 25.0 GAL

Name	Load Order	Rate	Inv.	Use as Preload
Carrier 1: 32% UAN	4	648.6 GAL		<input checked="" type="checkbox"/>
Carrier 2: 10-34-0	3	216.2 GAL		<input type="checkbox"/>
Carrier 3: ATS	2	108.1 GAL		<input type="checkbox"/>
Carrier 4: Zinc 10% Chelate	1	27.1 GAL		<input type="checkbox"/>

Carrier in Recipe: 1000.0 GAL  
Carrier Still Needed: 0.0 GAL

SAVE JOB RUN

Recipe: 29-1-33 Airport Corn Fertilizer  
PRELOAD VOLUME: 25.0 GAL

MULTIPLY: 0.0 / 1,000.0 GAL 46.7 GPA

2% UAN  
0.0/648.6 GAL  
10-34-0  
0.0/216.2 GAL  
ATS  
0.0/108.1 GAL  
Zinc 10% Chelate  
0.0/27.1 GAL

Manual controls START BATCH ID: 27 000000 BATCH: 1000.0 GAL ACTUAL: 0.0 GAL PRESSURE: 15.7 PSI BATCH TIME: 0.0 MIN MENU

## Carrier Blending on the Farm

Use QuickDraw spray tender trailer to blend fertilizer applied with planter. Have bulk semi-loads of fertilizer delivered direct to farm. Use totes of micro-nutrients, biologicals and other treatments. Create recipes for each field based on soil test and agronomic goals. Eliminate the logistical challenges of getting the correct blend for each field from your retail fertilizer supplier.







## Fertilizer Blending

Configuration of QuickDraw for mixing fertilizer blends.

### Typically Used in Stationary or Plant Installations for On-Farm Mixing.

- Mix up to 4 Products using 3" or 4" valves on high-capacity side of QuickDraw, with up to 9 products using 1 1/2 valves on low-capacity side.
- Pump Suction Configuration
- 2" Mass Meter



Use Carrier Flow Meter Auto Calibration process to set calibration for different products being blended.







# ACCESSORIES

## For Your Spray Tender System

Build your QuickDraw into a complete mixing trailer/station. Use existing components or complete your mixing station with QuickDraw Accessories.

- |   |                       |
|---|-----------------------|
| ■ <b>Stainless Steel Eductors (20 Gallon)</b> | ■ <b>Air Purge</b>    |
| ■ <b>Product/Chemical Connection Kits</b>     | ■ <b>ChemCaddy</b>    |
| ■ <b>iGX Honda Engine with 3" JOHNBLUE</b>    | ■ <b>Bulk Blaster</b> |

### Accessories

## Stainless Steel Eductors

### Options

- 20 Gallon Stainless Steel Tank
- With or Without ChemBlade Original Jug Knife
- Swing Down Parallel Linkage or Stand Mount Configurations

### Features

- Empty and Rinse Jugs Quickly
- Auxiliary rinse head to rinse non-cut jugs
- Incorporate AMS quickly (2 bags per min)
- Eliminate climbing on trailer with Swing Down Option



Swing Down



ChemBlade Original



Stand Mount

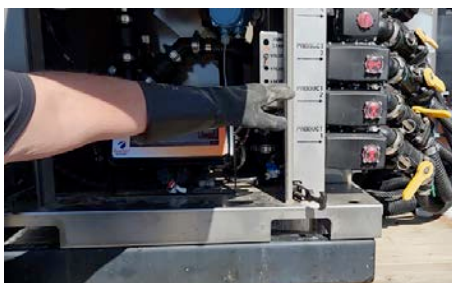




## Product/Chemical Connection Kits

Connection kits from QuickDraw product valves to totes.

- Male & Female coupler with valve at QuickDraw.
- Plumbing coupler to connect at tote.
- Available for 1 ½" and 2" hose.



## iGX Honda Engine with 3" JOHNBLUE

- QuickDraw provides start signal to start iGX Honda, AC Motors, Hydraulic Motors
- On "Batch Start" QuickDraw Provides Start Signal
- iGX Engine has Automated Choke
- Start Batch and Pump from iPad App
- Two Speed Electronic Throttle (Controller with Toggle Switch Installed in QuickDraw)



## Accessories

### Air Purge

Enable optional accessory by installing air purge regulator and valve kit.

When batch is complete, valve opens for set amount of time (sec).





## Chem Caddy

**Measure Partial-Jug  
Amounts Accurately  
and Safely.**

Equipped standard with flip-top lid for pouring jugs.

### Configurations:

- Swing Down Parallel Linkage or Stand Mount
- For use with QuickDraw
- With 2" or 3" Bypass Assembly

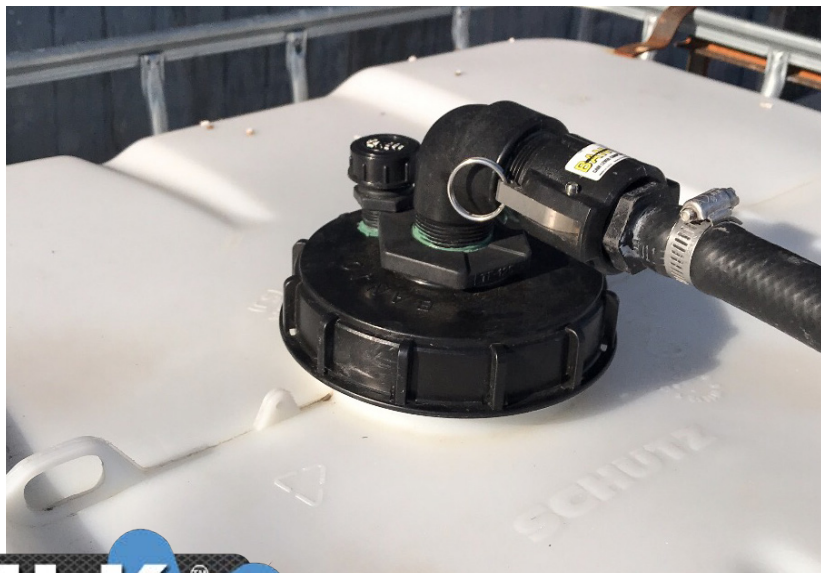


Optionally, available with EasyFlow closed transfer system. EasyFlow allows operator to transfer product without being directly exposed to chemical.



## Bulk Blaster

Rinse totes when you empty them. QuickDraw has a rinse cycle functions specifically designed to work with Bulk Blaster to quickly rinse totes at the time you empty them.



# CHEM-BLADE<sup>®</sup> ES ENCLOSED SYSTEM

The concept is simple, but the result is profound. When using traditional methods for opening, dumping, and rinsing, it is nearly impossible to avoid splattering chemical and rinsate. But with ChemBlade ES, you can put a full jug in, and 15 seconds later the lid opens and you remove an empty, fully cleaned jug - inside and out!



## CHEM-BLADE<sup>®</sup>

ChemBlade ES can be used as a stand alone mixing system or integrated with QuickDraw Max or Lite.

**Empties and Rinses Chemical Jugs with Zero Exposure to the Operator!**

### Four Easy Steps:

1. Load a Full Jug of Chemical
2. Press Button to Start
3. Wait 15 Seconds
4. Remove the Clean Jug





# QuickDraw

## SPRAY TENDER SYSTEM

### LITE

QuickDraw Lite provides mass flow or oval gear meter measurement of chemicals with refined features and operation. QuickDraw Lite is a manual or semi-automated spray tender system. In semi-automated operation enter the desired chemical amount, press start. When the set point is reached, the product valve automatically closes. In manual operation, simply open a product valve and watch the display until the desired chemical amount has been measured into the sprayer. Then close the product valve.



## Meter Options



**Mass Meter**



**Oval Gear Meter Chemical Measurement**



QuickDraw Lite	Meter		Configuration		Optional
Models	Gear Meter	Mass Meter	Venturi	Pump Suction	Carrier Flow Meter
6 Manual Valves	X	X	X	X	X
3 Automatic / 3 Manual Valves	X	X	X	X	X
6 Automatic Valves	X	X	X	X	X



# Examples of Spray Trailers





## Examples of Plant / Stationary Installations



## Examples for High Value / Specialty Crops





# Stronger Together.

9904 Hwy 25, Atwood, KS 67730  
[www.SurePointAg.com](http://www.SurePointAg.com)

## FAMOUS FOR INNOVATION AND FARM-TO-FARM CUSTOMIZATION.

SurePoint Ag has been a leader in ag tech for over fifteen years. Our Spray Tender product line has continually expanded with advanced features and reliability that is second-to-none. Ask your dealer about the added efficiency, safety, and profitability that comes from automating your mixing and loading processes with QuickDraw and our other suite of spray tender products.

**Learn More or Find a Dealer: [www.surepointag.com](http://www.surepointag.com)**

© 2023 by SurePoint Ag Systems, Inc. SurePoint Ag Systems, Inc. reserves the right to make changes in engineering, design, and specifications, or add improvements at any time without notice or obligation. Part Number: 394-6305Y1



Visit SurePoint Ag on YouTube for In-Depth  
Instructional Videos on Features and Operating  
System for QuickDraw.

