



SENTINEL™

Multiple Product Rate Control Platform
 Liquid • Anhydrous Ammonia • Direct Injection • Dry • Seed



NEW!
TWO SENTINEL™ CONTROLLER OPTIONS

1000 MODEL



- Single Product Functionality
- Utilizes SurePoint Ag's Level 1 ECU
- Pair Up to 3 ECU's for Multiple Functions

2000 MODEL



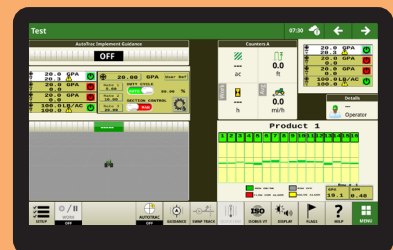
- 4 Product Functionality
- Utilizes SurePoint Ag's Level 2 ECU
- Can Be Fully Customized to Your Operation



NEW IN 2024 - SPLIT SCREENS

Sentinel widgets can be added to display run screens.

**Supported on approved VT4 compliant displays, including Gen4 and G5.*



SENTINEL

AVAILABLE FUNCTIONS

SurePoint's ISOBUS control platform providing for rate control and monitoring of liquid, NH₃, and dry products.

ROW MONITOR

Liquid Row Monitor

- In-cab notifications of flow variances and row blockages
- E-mag flow meter measures flow of every row - 96 Rows Max
- Flow meters have no moving parts
- Map as-applied rate of each row with supported displays*



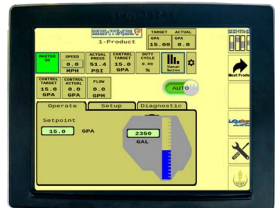
NH₃ Row Monitor

- In-cab notifications of flow variances and row blockages
- Temperature sensors monitor every manifold outlet - 64 Rows Max
- Detects full or partial plugs
- Add to existing NH₃ application system
- Row Blockage mapping with supported displays**



RATE CONTROL

- Liquid
- Anhydrous Ammonia
- Direct Injection
- Dry (Limited Release MY24)
- Drills/Air Seeder Seed Rate (Limited Release MY24)



ROW CONTROL

- Variable flow control valve on each row
- E-mag flow meter measures flow
- Greatest application flexibility for rate, speed and product
- Simplified distribution plumbing



DISPLAY COMPATIBILITY

DISPLAY	ROW MONTIOR ONLY	RATE CONTROL	ROW CONTROL	DISPLAY	ROW MONTIOR ONLY	RATE CONTROL	ROW CONTROL
DEERE				TRIMBLE			
2630	*+	*++		2050	*		
GEN4	*	*	*	1060	*	*	*
G5	*	*	*	1260	*	*	*
CASE				RAVEN			
PRO700	*	*	*	Viper 4	*		
PRO700+	*	*	*	CR7	*	*	*
PRO1200	*	*	*	CR12	*	*	*
AGLEADER				AGCO			
InCommand 800 & 1200	*	*	*	Vario	*		
				Fendt 1	*	*	*

+Maximum 24 Rows

++Supported on 2630 when no other TASK Control devices are used.

SENTINEL™ 1000

Single Product/Mode ISOBUS Rate Controller. Use a single mode from options listed.

	MODE	MAX SECTIONS OR ROWS	MAPPING
LIQUID APPLICATION			
	Row Monitor	64	As Applied by Row
	Rate Control	12	As Applied Implement
	Rate Control with Row Monitor	12	As Applied by Row
NH3 APPLICATION			
	NH3 Row Monitor	64	Blockage Mapping by Row
	NH3 Rate Control	12	As Applied Implement
	NH3 Rate Control with Row Monitor	12	As Applied Implement
DRY APPLICATION			
	Rate Control	Single PWM Output 12 Sections	
DIRECT INJECTION			
	Rate Control of Spartan Direction Injection System	Matched to carrier product sections	As Applied Implement

SENTINEL™ 2000

Four Product/Mode ISOBUS Rate Controller. Use up to four modes from given options.

	MODE	MAX SECTIONS OR ROWS	MAPPING
LIQUID APPLICATION			
	Row Monitor	96 Rows Between All Products	As Applied by Row
	Rate Control	16 Split Between All Products or 64 CAN ZIP/Product, 96 Max	As Applied Implement, When Row Monitor Not Present
	Rate Control with Row Monitor	16 Split Between All Products or 64 CAN ZIP/Product, 96 Max	As Applied by Row
	Row Control with Row Monitor	64 Rows or Product, 96 Max	As Applied by Row
NH3 APPLICATION			
	NH3 Row Monitor	64 Rows Between All Products	Blockage Mapping by Row
	NH3 Rate Control	16 Split Between All Products	As Applied Implement
	NH3 Rate Control with Row Monitor	16 Split Between All Products	As Applied Implement and Blockage Mapping by Row
DRY APPLICATION			
	Rate Control	Single PWM Output 12 Sections	
DIRECT INJECTION			
	Rate Control of Spartan Direction Injection System	Matched to carrier product sections	As Applied Implement
DRILL AND SEEDERS			
	Seed Rate Control (Limited Release MY24)	5 PWM Drives or 1 PWM Drive with 12 Sections	As Applied Implement



Learn More or Find a Dealer: www.surepointag.com

9904 Hwy 25, Atwood, KS 67730